



# 2025 ASIA-PACIFIC COMMUNITY MEETING

A circular portrait of Gina Gobeyn, a woman with dark, wavy hair, wearing a black turtleneck, smiling. The portrait is set within a green circular frame that is partially cut off by the left and bottom edges of the image. The background of the entire image is a dark teal color with various colorful circular and semi-circular shapes in shades of green, blue, orange, and purple.

# GINA GOBEYN

Executive Director

PCI Security Standards Council



**WELCOME TO  
BANGKOK**





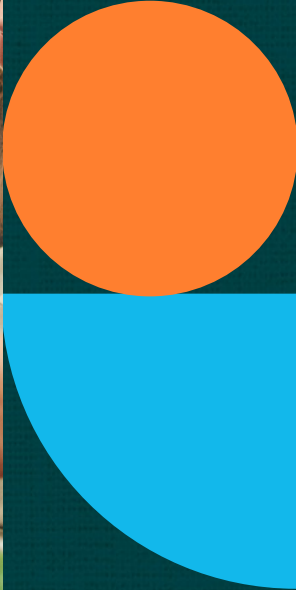
**\$966,000,000,000,000**



2024

**5,000** Billion Second  
Per Minute









**DRIVE**

stronger outcomes



# OPTIMIZING engagement





# BIG ADVANCEMENTS

- EXPANDED** Board of Advisors
- GROWING** Global Engagement
- MORE** Collaboration Opportunities
- EVOLVING** Engagement Model
- AGILE** Standard Development



# BIG ADVANCEMENTS

- EXPANDED** Board of Advisors
- GROWING** Global Engagement
- MORE** Collaboration Opportunities
- EVOLVING** Engagement Model
- AGILE** Standard Development

# PCI SSC Leadership Vision Update

## Partnerships That Strengthen Payment Security Panel Discussion

**Diana Greenhaw**

Head of Education &  
Engagement

PCI Security Standards Council



**Deanne Zettler**

Head of Product & Technology

PCI Security Standards Council

## A Product- Powered Leap into the Future of Payment Security



# Learning & Collaboration Starts Today!

Packed Agenda

Business and Technical Tracks

Sessions Led by Industry Leaders  
and PCI SSC Experts

Many Networking Opportunities

Full Vendor Showcase



# 2025 Stakeholder Engagement



Subscribers and  
Followers

**195,000**

Webinar  
Attendees

**2,400**



Trained  
Individuals

**4,797**

Workshop  
Participants

**550**



# 2025 Stakeholder Engagement



Subscribers and  
Followers

**195,000**

Webinar  
Attendees

**2,400**



Trained  
Individuals

**4,797**

Workshop  
Participants

**550**



# Evolving our WAY and PACE





2025

*Celebrating*

20

YEARS OF SECURING  
PAYMENT DATA



The image features a central graphic of two hands shaking, symbolizing collaboration. The hand on the left is dark-skinned, and the hand on the right is light-skinned. They are set against a dark teal background. In the top-left corner, there is a bright green circular shape. In the bottom-right corner, there is a bright blue circular shape. The text is positioned in the upper half of the image.

**ADVANCING**

**PAYMENT SECURITY**

through global collaboration

The image features a central graphic of two hands shaking, symbolizing collaboration. The hand on the left is dark-skinned, and the hand on the right is light-skinned. They are set against a dark teal background. In the top-left corner, there is a bright green circular shape. In the bottom-right corner, there is a bright blue circular shape. The text is positioned in the upper half of the image.

**ADVANCING**

**PAYMENT SECURITY**

through global collaboration

# LISTEN SHARE ASK



# Connect **WITH OUR COMMUNITY**





**2025**  
**ASIA-PACIFIC**  
**COMMUNITY**  
**MEETING**



**2025**  
**ASIA-PACIFIC**  
**COMMUNITY**  
**MEETING**