



# 2025 NORTH AMERICA COMMUNITY MEETING

2025  
NORTH  
AMERICA  
COMMUNITY  
MEETING

# Wash, Rinse, Validate, Repeat - Day-2-Day P2PE



# Skyler Ferran

QSA, QPA, P2PE, CPSA-L/P  
Principal  
Coalfire Systems, Inc



# Janessa Selvey

ISA, P2PE  
Lead, Cyber Risk Payment Security  
Target Corporation

# What is P2PE?

## More than just PCI alphabet soup

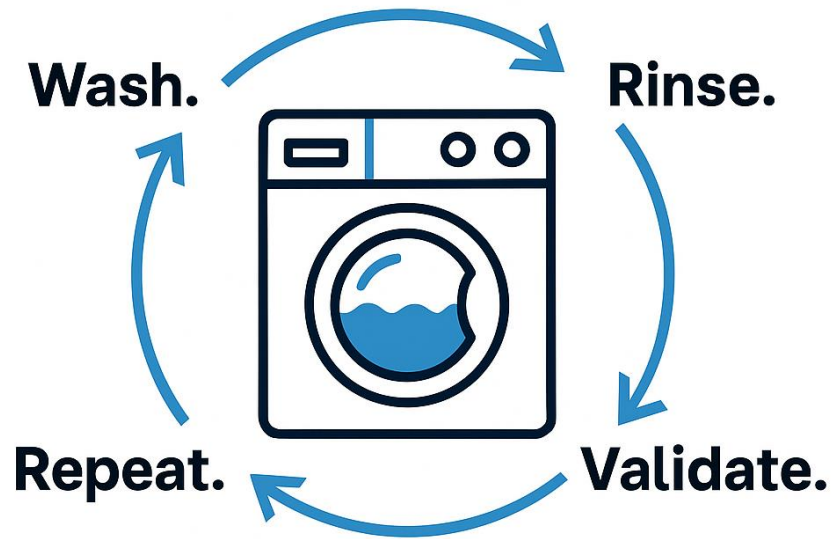
- PCI DSS scope can grow quickly, especially with Card Present Transactions
- The more systems that card data passes through, the more opportunities there are for that data to be compromised – More potential for a “weak link”.
- P2PE doesn't just reduce control applicability, it increases security
- Solution Validation vs Environment Assessment

What does this mean for a merchant?

How do I evaluate it as an assessor?



## P2PE Cycle



## Merchant's Perspective:

From Theory to Practice: How Merchants Run the Cycle

- Success is built on daily execution
- The cycle must be consistent and repeatable
- Merchants drive security through action

# WASH



## Merchant's Perspective:

WASH: Implementing and Establishing the P2PE Foundation

- Deploy a validated P2PE solution to reduce PCI scope
- Align tightly with the PIM and approved configurations
- Establish device inventory and ownership from Day 1
- Build change control and maintenance into your foundation

# RINSE



## Merchant's Perspective:

RINSE: Operational Maintenance & Continuous Control

- Embed daily checks and monitoring across your estate
- Track firmware, device handling, and chain-of-custody
- Make rinse a repeatable habit, not a reaction

# VALIDATE



## Merchant's Perspective:

VALIDATE: Tools to Confirm You're Doing It Right

- Use the PIM, solution listing, and PTS policy as guardrails
- Validate implementation continuously, not just annually
- Keep documentation audit-ready year-round
- Ensure full alignment before using SAQ P2PE



## P2PE Cycle



Wash.  
Rinse.  
Validate.  
Repeat



# Merchant's Perspective:

REPEAT: Embed the Cycle and Make It Routine

- Follow a consistent cycle: PIM → Listing → Device checks → Logs
- Operationalize repeatability for long-term scale
- Build confidence through consistency and visibility
- The result: reduced scope, cleaner audits, stronger security

# Validating a Merchant's P2PE Implementation:

## Resources

- P2PE Instruction Manual (PIM)
- P2PE Solutions Listing
- PTS Security Policy
- SAQ P2PE

### 1. P2PE Solution Information and P2PE Solution Provider Contact Information

#### 1.1 P2PE Solution Information (as per the listing on the PCI SSC website)

P2PE Solution Name:	<a href="#">Disco Lives Forever P2PE Solution</a>
P2PE Solution Listing Reference Number (Assigned by PCI SSC)	<a href="#">2063-01701.405</a>

PCI Qualified Professionals

Products & Solutions Listings

PCI Point-to-Point  
Encryption (P2PE)<sup>®</sup>  
Solutions

Firmware #: 1.xxx  
Applic #:

[View Security Policy](#)

SAQ P2PE

v4.0.1 - Oct. 2024

English PDF



# Validating a Merchant's P2PE Implementation:

## Step by Step

- Obtain the PIM
- Check the P2PE Listing (except MMS)
  - A note on Expiration Dates – FAQ 1484
- Check the devices – Samples are more than just free snack!
- ???
- Profit!

# Validating a Merchant's P2PE Solution:

## Device Diversity

- All images courtesy of <https://listings.pcisecuritystandards.org>



### IDENTIFICATION

The product hardware version (HW ID) is printed on the label at the back side of the device;

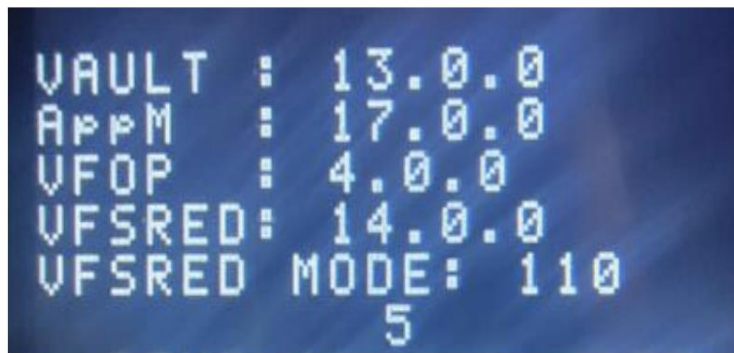


Figure 2b: Boot Splash Screen

In addition, the detailed information about the security kernel versions can be shown on request from the "Basic information" panel in System Mode. To view the security kernel versions, login in System mode and select "Home > Information > Basic information" panel. Scroll through the screen and locate the four kernels; see Figure 2c.

# Validating a Merchant's P2PE Solution:

## Device Diversity

- All images courtesy of <https://listings.pcisecuritystandards.org>



1st Digit	2nd Digit	3-4th Digits	5th Digit	6th Digit	7th Digit	8-9th Digit	10th Digit	11-12th Digits
Product	PCI Digit	Display	Connection Type	Wireless Charging	Major change	Minor change	Separator	Manufacturing Country
O: (Fixed) SOLO card reader	1: (Fixed) Version 1	DT: (Fixed) Display + Touchscreen	1: (Fixed) Wifi + Cellular	W: Wireless   N: No wireless	A: without camera   B: with camera	Variable Version	-(Fixed)	CN: China   BR:

**Software versions**

The product firmware versions can be retrieved using a software menu on the terminal. From the Menu, tap Settings, then About. Both serial number and firmware version will be displayed.

The firmware version will be displayed as follows:

3.3.x.x

Only the first two digits (3.3.x.x) of the firmware versions are the PCI approved versions. The rest digits of the version indicate non-security related changes. The table below defines each of the digits in the SW version.

# Validating a Merchant's P2PE Solution:

## Device Diversity

- All images courtesy of <https://listings.pcisecuritystandards.org>

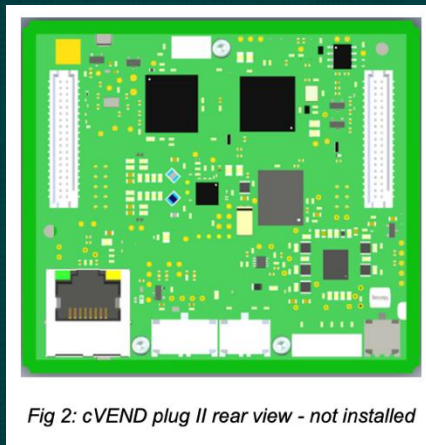





Fig 2: cVEND plug II rear view - not installed

<b>cVEND plug II Developer Version</b> <b>6836.060.00</b>	<b>FEIG</b> Made in Germany
 Serial No.: 9174538	 Device-ID: 180C597A
MAC: 00:1C:9B:0E:65:22	Input: 5V
HW: FE1141-1-2.0	<b>UKCA</b> <b>CE</b> 
SW: aD03.01.00-00.00-2-2 20231031	Industriestr. 1a - 35781 Weilburg
FCC ID: PJMCVENDII	
IC: 6633A-CVENDII	

Applications that are running on the cVEND plug II devices can identify the installed firmware version by reading the contents of the file /boot/version.

# Takeaway Thoughts for Merchants:

Thoughts on how to implement a strong P2PE program for your organization.

- P2PE simplifies PCI DSS and reduces overall scope when implemented correctly
- SAQ P2PE offers a streamlined path, but only with full alignment to the listing
- Long-term success depends on continuous maintenance and validation

# Final Thoughts