

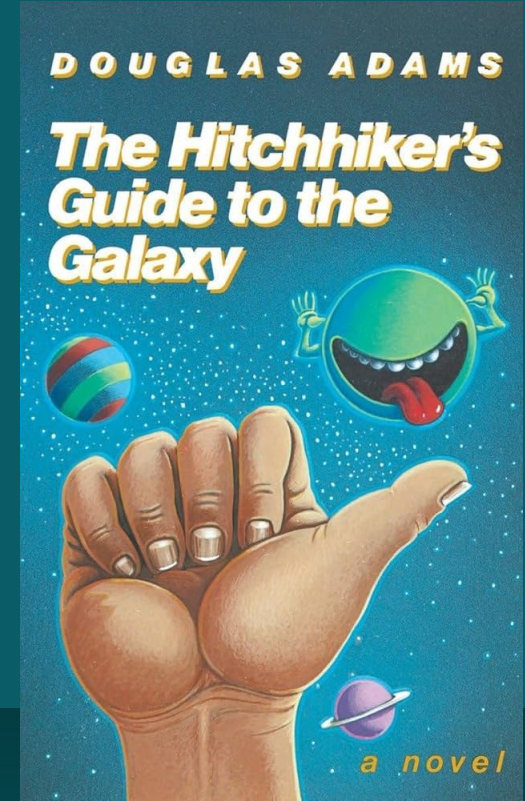
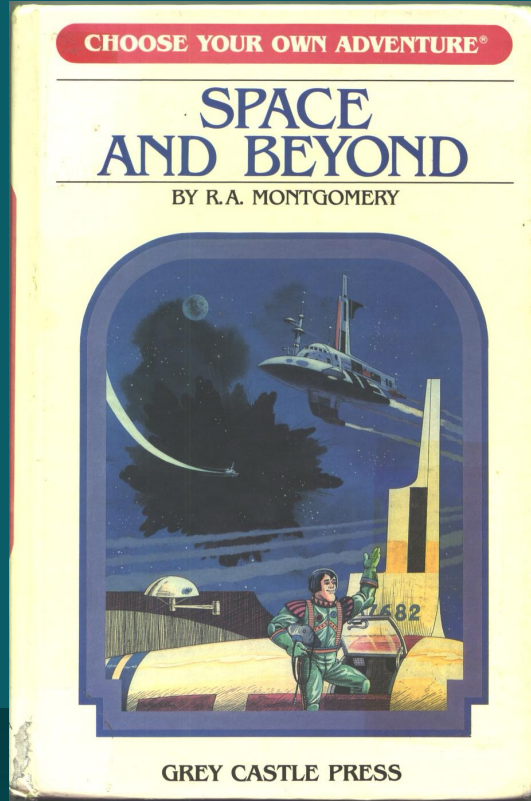
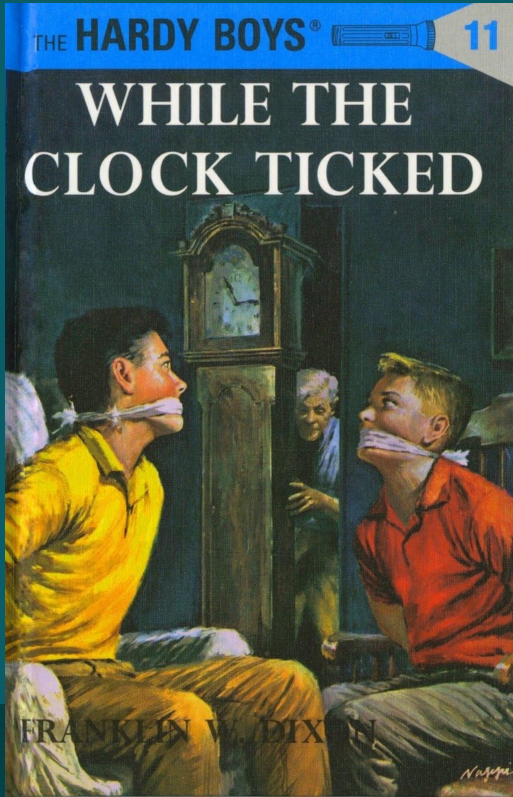
# 2024 Asia-Pacific Community Meeting

## The Hitchhiker's Guide to the Software Security Galaxy



# Jake Marcinko

Senior Manager, Solution Standards  
PCI Security Standards Council





Files

master

Go to file

- COMPILED
- README.md
- earth.zil
- globals.zil
- heart.zil
- misc.zil
- parser.zil
- s4.errors
- s4.xzap
- s4.zil
- s4.zip
- s4freq.xzap
- syntax.zil
- unearth.zil
- verbs.zil
- vogon.zil

hitchhikersguide / README.md

historicalsource Update README.md 8943642 · 5 years ago History

Preview

Code 41 lines (24 loc) · 3.6 KB

Blame

Raw Copy Download Edit

# The Hitchhiker's Guide to the Galaxy Source Code Collection

The Hitchhiker's Guide to the Galaxy is a 1984 interactive fiction game written by Douglas Adams and Steve Meretzky and published by Infocom.

Further information on The Hitchhiker's Guide to the Galaxy:

- [Wikipedia](#)
- [The Digital Antiquarian](#)
- [The Interactive Fiction Database](#)
- [The Infocom Gallery](#)
- [IFWiki](#)
- [The Infocom Cabinet: Hitchhiker's Guide to the Galaxy](#)

## What is this Repository?

This repository is a directory of source code for the Infocom game "The Hitchhiker's Guide to the Galaxy", including a variety of files both used and discarded in the production of the game. It is written in ZIL (Zork Implementation Language), a refactoring of MDL (Muddle), itself a dialect of LISP created by MIT students and staff.

The source code was contributed anonymously and represents a snapshot of the Infocom development system at time of shutdown - there is no remaining way to compare it against any official version as of this writing, and so it should be considered canonical, but not necessarily the exact source code arrangement for production.

## Basic Information on the Contents of This Repository



## The Hitchhiker's Guide To The Software Security Galaxy



! " \$ % # & \* ( ) DEL

Q W E R T Y U I O P ↵

A S D F G H J K L ' ;

Z X C V B N M , . ?

NUM LOCK SPACE

MOVES  
0

SCORE  
0

AWARDS  
0

UP ↑ IN

← WAIT →

DOWN ↓ OUT

(( )) ANY ESC



# THE HITCHHIKER'S GUIDE TO THE SOFTWARE SECURITY GALAXY

Infocom interactive fiction – a science fiction story

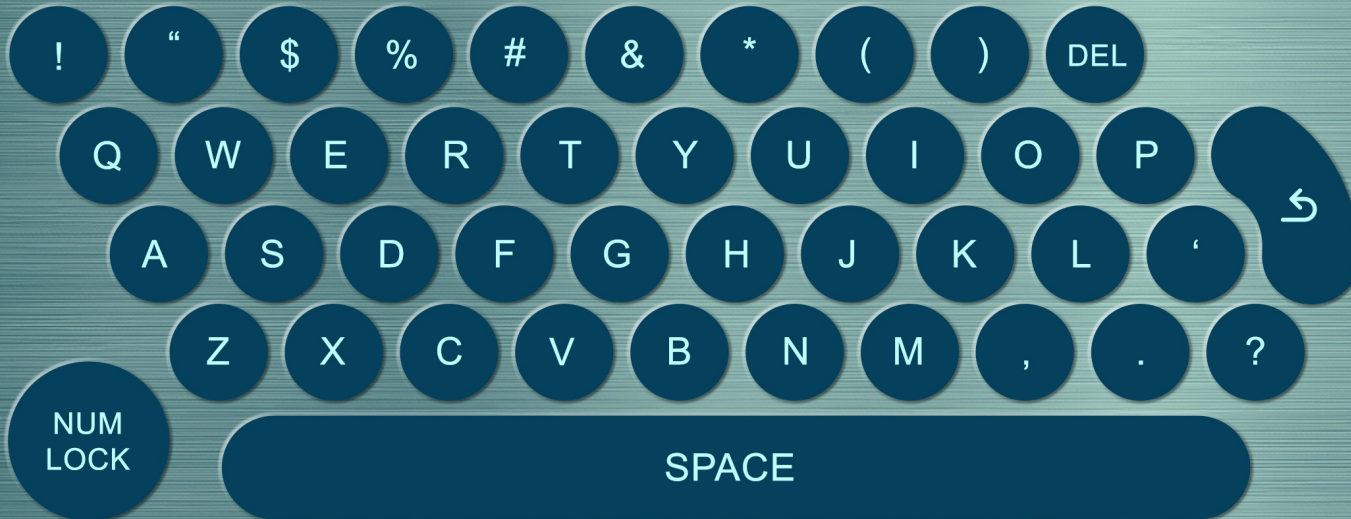
Copyright (c) 1984 by Infocom, Inc. All rights reserved.

Release 31 / Serial number 871119. Interpreter 6 Version E

## Chapter 1: The Beginning of the End



## The Hitchhiker's Guide To The Software Security Galaxy



# THE HITCHHIKER'S GUIDE TO THE SOFTWARE SECURITY GALAXY

Infocom interactive fiction – a science fiction story

Copyright (c) 1984 by Infocom, Inc. All rights reserved.

Release 31 / Serial number 871119. Interpreter 6 Version E

## Chapter 1: The Beginning of the End

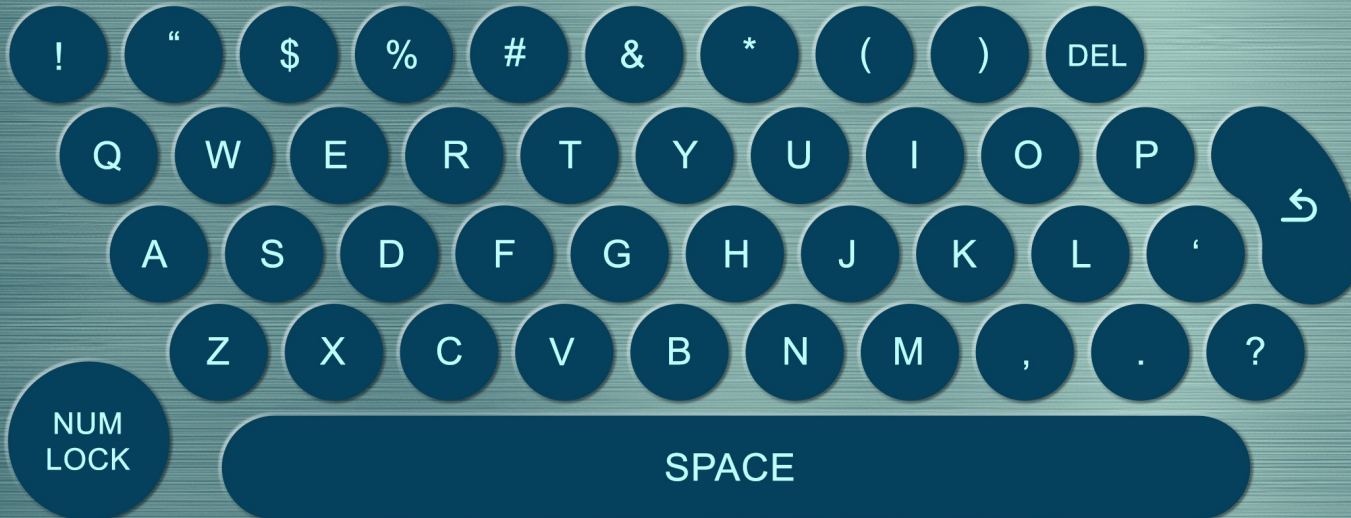
You wake up. The room is spinning very gently round your head. Or at least it would be if you could see it, which you can't.

It is pitch black.

>



## The Hitchhiker's Guide To The Software Security Galaxy



You wake up. The room is spinning very gently round your head. Or at least it would be if you could see it, which you can't.

It is pitch black.

> **Turn on light**

You manage to clumsily fumble for the light switch, and miraculously, you find it. Good start to the day. Pity it is going to be one of the worst days of your life. The light is now on.

The light reveals your bedroom, which is a mess. It is a small bedroom with a faded carpet and old wallpaper. There is a desk, a chair, and a window with the curtains drawn. Slung over the chair is a tatty dressing gown. On the desk is a phone.

>



## The Hitchhiker's Guide To The Software Security Galaxy



on.

The light reveals your bedroom, which is a mess. It is a small bedroom with a faded carpet and old wallpaper. There is a desk, a chair, and a window with the curtains drawn. Slung over the chair is a tatty dressing gown. On the desk is a phone.

**> Get out of bed**

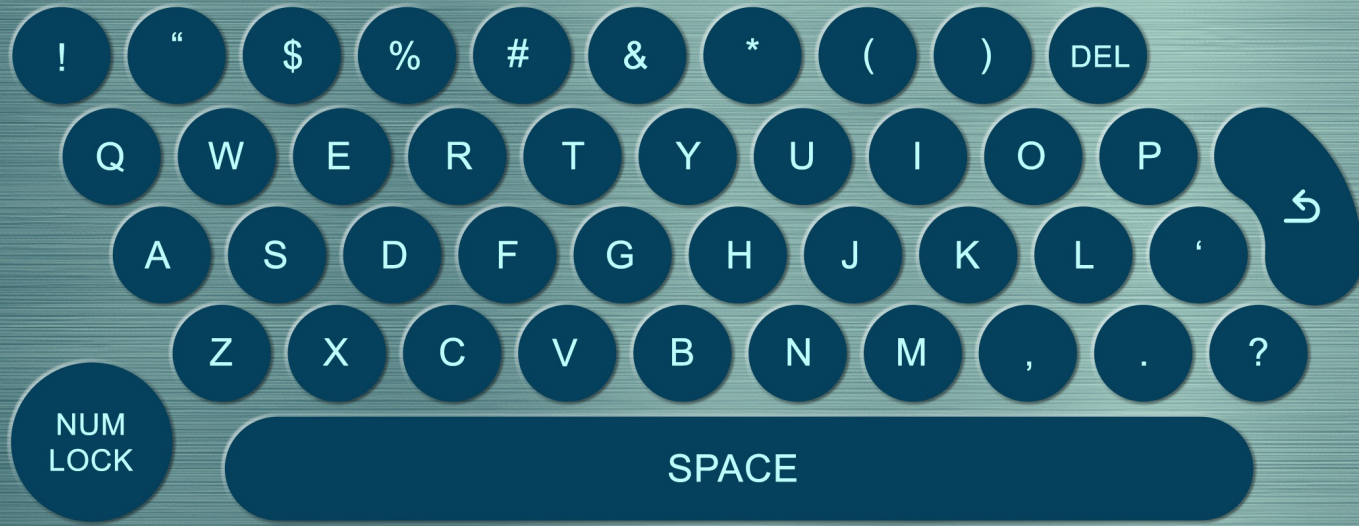
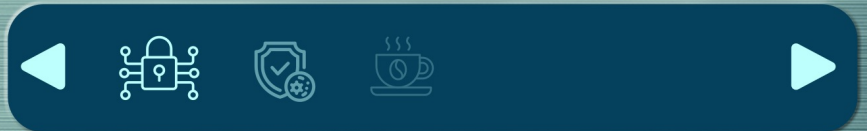
You stand up, still a bit woozy from the previous night's libations. As you put on the tattered gown, you notice a couple of analgesic pills in the left pocket. You quickly take them, while praising the small fortunes in life.

The brief moment of peace is interrupted abruptly by the skull shattering ring of the phone on your desk. You try to ignore it, but the sound is only exacerbating your already blistering hangover.

>



## The Hitchhiker's Guide To The Software Security Galaxy



# No Code / Low Code Software Development



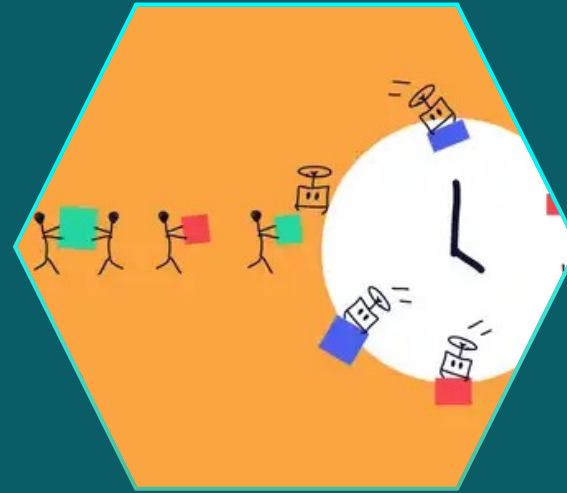
VS



# No Code / Low Code

## Capabilities and Benefits

- Easier to use
- Faster development
- Lower cost
- Better customer experience



# No Code / Low Code

## Security Issues and Considerations



Vulnerabilities in NCLC platforms and components



Insecure authentication and communications



Insecure coding practices



Lack of visibility and control



Misconfigurations

# No Code / Low Code

## Security Issues and Considerations



Vulnerabilities in NCLC platforms and components



Insecure authentication and communications



Insecure coding practices



Lack of visibility and control

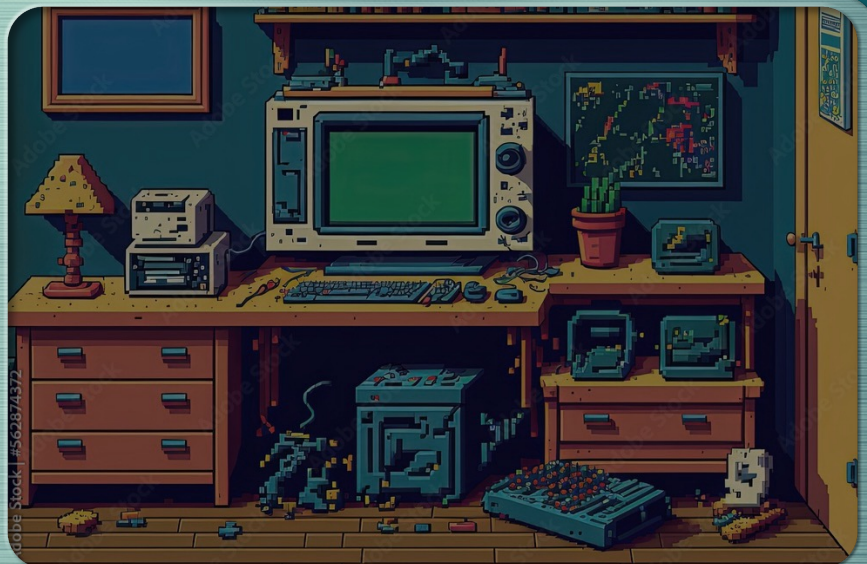


Misconfigurations

# No Code / Low Code

## Key Takeaways





## The Hitchhiker's Guide To The Software Security Galaxy



! " \$ % # & \* ( ) DEL

Q W E R T Y U I O P ↵

A S D F G H J K L ' , . ?

NUM LOCK SPACE

MOVES  
10

SCORE  
30

AWARDS  
0

UP ↑ IN

← WAIT →

DOWN ↓ OUT

(()) ANY ESC

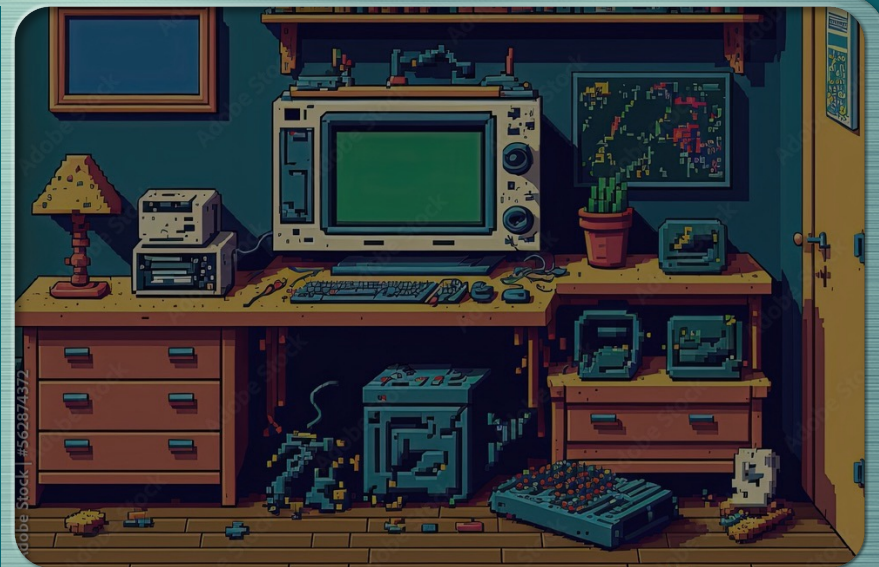


## Chapter 2: Shadows in Darkness

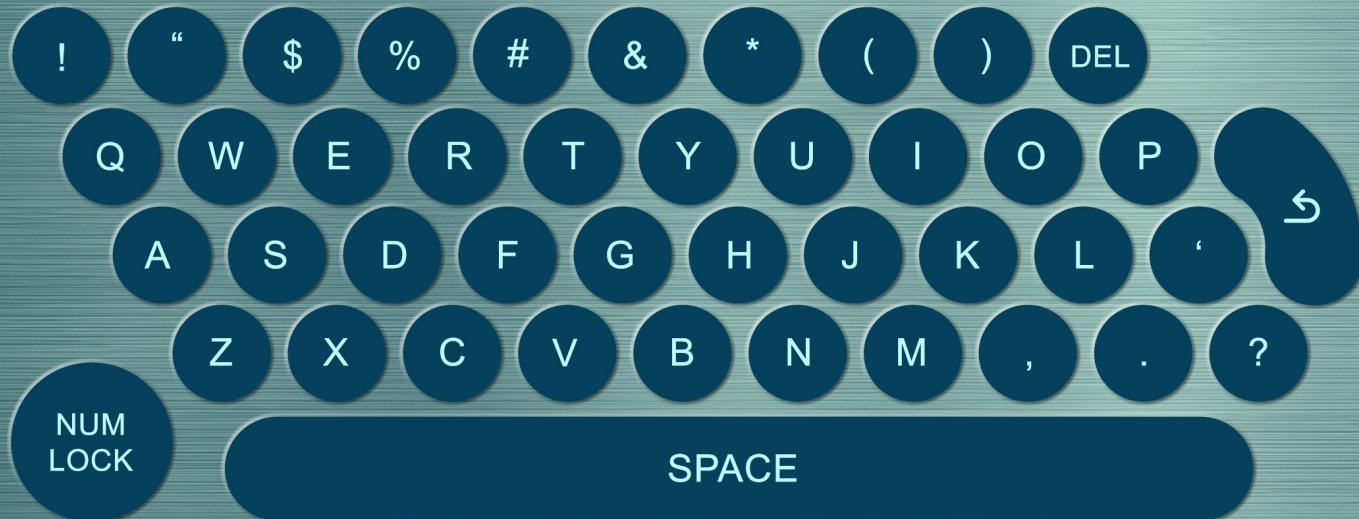
Having dealt with the latest crisis created by your boss, you can now continue working on your favorite project: the incredibly popular role-playing game titled *42: Adventures in the Infinite Improbability*.

After pushing a few updates to the production code, the Technical Support Team has discovered several intermittent issues with the game's operation. There have been reports of random data glitches, missing information, and even a few system crashes in the payment functions for the "Utter Mayhem" gameplay feature and other expansion offerings. You suspect it may be an API conflict causing the issue, but you aren't quite sure.

>



## The Hitchhiker's Guide To The Software Security Galaxy



# APIs in the Cloud

## Capabilities and Benefits

Enhance data accuracy

---

Improve efficiency

---

Scalable

# APIs in the Cloud

## Capabilities and Benefits

Enhance data accuracy

---

Improve efficiency

---

Scalable

# APIs in the Cloud

## Security Issues and Considerations



Zombie and Shadow APIs

Exposed functionality

Data protection and privacy

Suggested mitigations

# APIs in the Cloud

## Security Issues and Considerations



---

Zombie and Shadow APIs

---

Exposed functionality

---

Data protection and privacy

---

Suggested mitigations

# APIs in the Cloud

## Security Issues and Considerations



---

Zombie and Shadow APIs

---

Exposed functionality

---

Data protection and privacy

---

Suggested mitigations

# POS in the Cloud / API Security Key Takeaways

Benefits

---

Security Issues & Considerations

---

Stay updated on API security!



# POS in the Cloud / API Security Key Takeaways

Benefits

---

Security Issues & Considerations

---

Stay updated on API security!





### The Hitchhiker's Guide To The Software Security Galaxy



MOVES 22	UP ↑	IN	Globe icon
SCORE 55	←	WAIT	
AWARDS 3	DOWN ↓	OUT	Target icon
	(( ))	ANY	

# Automated Software Assessments & Attestations

## Capabilities and Benefits



Cost Savings

---

Increased productivity

---

Greater scalability

---

Simplified GRC management

# Automated Software Assessments & Attestations

## Capabilities and Benefits



Cost Savings

---

Increased productivity

---

Greater scalability

---

Simplified GRC management

# Use of AI and Automation in Assessments

## PCI SSC Position

- PCI SSC *does not* permit the use of AI for decision-making functions in PCI security assessments.
  - Pass / fail determinations
  - Compensating control analysis and justification
- PCI SSC *may* permit the use of automation in PCI security assessments for other assessment functions:
  - Automated security testing (vulnerability scans, static analysis, dynamic analysis, etc.)
  - Evidence generation through automated means (e.g., build tools, logging mechanisms, security testing outputs, etc.)
- PCI SSC is currently working on guidance to address this issue.

# Use of AI and Automation in Assessments

## Future considerations

- PCI SSC is evaluating how to support broader use of automation and AI in future PCI security assessments.
  - Reporting
  - Attestations
  - Listing updates
- More information on how these could be supported to be provided in another session titled, “You dropped a BOM on me, baby.”

# Key Takeaways

Know the risks associated with the use of No Code / Low Code tools.

Know what APIs are exposed to the Internet and secure them.

Don't rely on automation for decision-making functions.

A pixelated space scene. In the center is a large, glowing brown sun with a ring of smaller brown dots. To the right is a large blue planet with a small red moon. To the left is a purple spiral galaxy. The foreground shows a grey, cratered moon surface. The background is dark blue with various stars in orange, blue, and white.

Thank You!



Security  
Standards Council®